

Centrally configuring and deploying the NetSupport School Tutor app for Google Chrome

In this guide we will explain how an IT administrator can use the Google Admin Console to centrally configure and deploy (force-install) the NetSupport School Tutor app (version 1.16 and above) to the required teacher Chrome accounts.

Instructions on how to install the additional NetSupport components required to facilitate a connection between a teacher's device and student Chromebooks, are available in the companion document, **Configuring NetSupport School for use in a Google Chrome environment**.


The assumption is made throughout this document that your Chrome devices are already enrolled and you have configured your Organisational Unit (OU) structure within the Admin Console to allow you the ability to force install/configure the NetSupport School Tutor app settings for the required user accounts at the appropriate OU level.

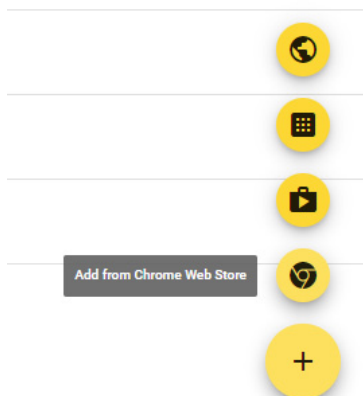
Centrally deploying the NetSupport School Tutor app for Google Chrome

The Google Admin Console provides the perfect environment for you to centrally configure your Google apps and extensions at user (OU) level to ensure they are securely deployed to the required Chrome accounts along with any custom settings each app may require, thus minimising or removing the need for any end user interaction.

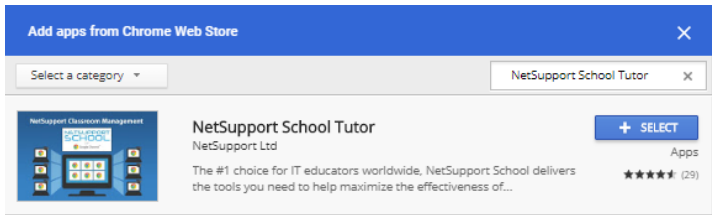
In the case of the Tutor app, a key part of the process is the creation of a customised configuration file (JSON file) containing the required NetSupport connectivity settings, ensuring that when the teacher(s) logs in, the app is already pre-installed with the necessary settings to connect to student devices.

Locate the NetSupport School Tutor app

1. Login to the Google Admin Console (admin.google.com).
2. Click the 'hamburger' menu option  in the top left corner of the Console and select **Devices** or click the **Devices** icon in the main window.
3. Select **Chrome management**.
4. Select **Apps & extensions**.
5. Select the OU level that contains the required teacher accounts that you want to force-install the NetSupport School Tutor app to.
6. Search for the NetSupport School Tutor app. In the bottom right of the screen, click the option to add from the Chrome Web Store.

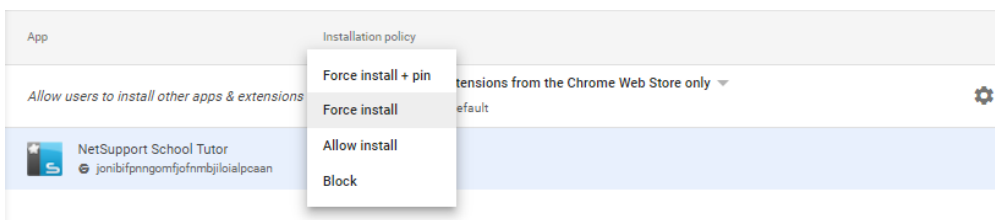


7. Type NetSupport School Tutor in the Search box and click **Select**.



Set the NetSupport School Tutor to 'force-install'

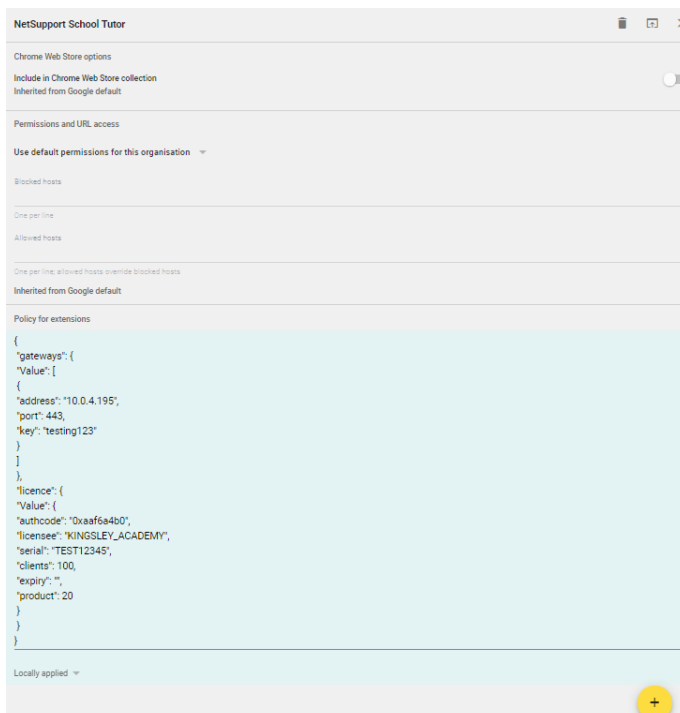
1. Once the NetSupport School Tutor app has been added to the list, select the Installation policy drop-down menu next to the app and select **Force Install**. (You can choose to force-install with a pin if required.) This setting can be applied locally or inherited from your top level OU.



2. Using a custom configuration file, you can also specify as part of the deployment the required NetSupport Connectivity settings to avoid the need for teacher interaction. The file, in JSON format, should include the IP address of your central NetSupport Connectivity Server (NCS) / Gateway, the default communication port (443) and the NCS/Gateway security key set when you installed the NCS. For a first time installation, you can also include your NetSupport School licence information.

A sample JSON file is provided at the end of this document should you wish to copy it and edit the variables. Our **support team** will also be happy to provide you with a file or answer any questions you may have. Once the JSON file is created, this needs to be copied to the Google Admin Console.

3. Open the JSON file in a text editor and copy the information. Return to the Google Admin Console and paste the json information into the 'Policy for extensions' section for the NetSupport School Tutor app.

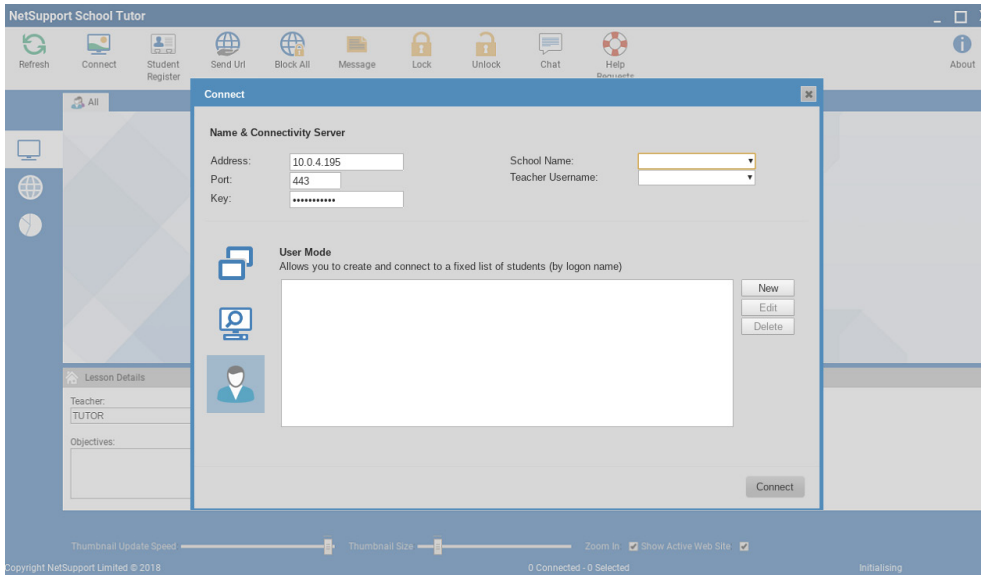




4. Click **Save** in the top right of the screen.

REVERT SAVE

When the teacher launches the Chrome Tutor, the deployed Connectivity settings will already be applied.



Note: If the licence information has been specified incorrectly in the deployed JSON file, you will be prompted to re-enter the details manually before being allowed to continue.

Creating a NetSupport School Tutor configuration file (JSON file)

The following is a typical example of a JSON file containing the required NetSupport Connectivity and licence settings (if applying a sale licence). Copy the text to a suitable editor and simply replace the highlighted variables with your own details as needed, remembering to save the file with the .JSON extension:

```
{
  "gateways": {
    "Value": [
      {
        "address": "10.0.4.195",
        "port": 443,
        "key": "testing123"
      }
    ]
  },
  "licence": {
    "Value": {
      "authcode": "0xaaf6a4b0",
      "licensee": "KINGSLEY_ACADEMY",
      "serial": "TEST12345",
      "clients": 100,
      "expiry": "",
      "product": 20
    }
  }
}
```

We hope that following these instructions will help ensure a smooth deployment of the NetSupport School Tutor app for Google Chrome. However, if you require additional help, our **support team** will be pleased to answer any questions you may have.