

Restricting Access to the NetSupport School CCE Tutor in a Windows MultiPoint Server

NetSupport School Centralized Computing Edition is a class leading training software solution, providing Teachers with the ability to instruct, monitor and interact with their Students.

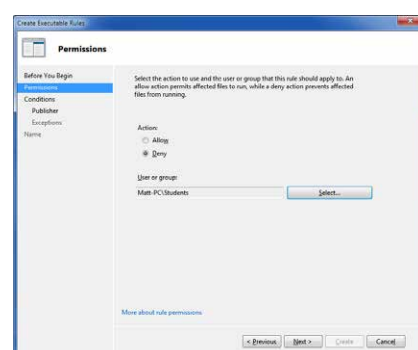
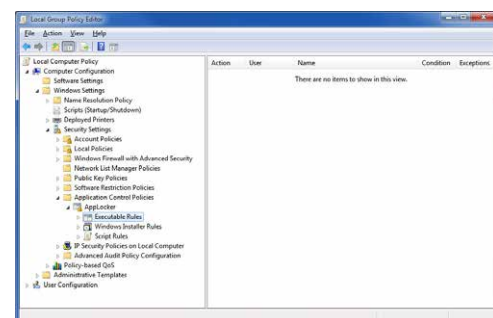
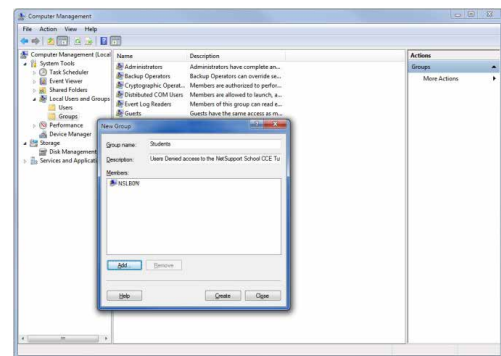
With a wealth of unique and innovative features, NetSupport School Centralized Computing Edition (CCE) is consistently voted 'Top of the Class' by industry experts. Combining advanced classroom PC monitoring, real-time Presentation and Annotation tools, with an innovative customised Testing suite, Internet and Application control, automated Lesson Plans, Printer Management, Instant Messenger control, Content Monitoring and Desktop Security, NetSupport School CCE rises to the challenge and requirements of today's modern classroom.

Restricting Access to the NetSupport School CCE Tutor Application

NetSupport School CCE is a powerful classroom management tool designed specially with the Teacher in mind. To avoid misuse it is recommended that the use of the NetSupport School CCE Tutor is restricted to designated users. NetSupport recommend using Windows MultiPoint Server's built in security feature App Locker to deny access to a selected group of users.

How to Configure Windows MultiPoint Server to Restrict Access to the NetSupport School CCE Tutor using App Locker

1. Start the Windows MultiPoint Server in Maintenance Mode and logon as an administrative user.
2. Run the Computer Management Console by typing compmgmt.msc into the search bar and pressing Enter.
3. In the Computer Management Console navigate to Groups which can be found under {System Tools}{Local Users and Groups}.
4. Right Click on Groups and select 'Create Group...'
5. On the New Group dialog provide a suitable name and optionally a description to identify this group.
6. Click Add... and select the user(s) that you do not want to be able to run the NetSupport School CCE Tutor Application.
7. Run the Local Group Policy Editor by typing gpedit.msc into your search bar and pressing Enter.
8. In the Local Group Policy Editor navigate to AppLocker which can be found under {Computer Configuration}{Windows Settings}{Security Settings}{Application Control Policies}.
9. Right Click on Executable Rules and select 'Create a New Rule...'
10. On the Permissions dialog set the Action to 'Deny'.
11. Click Select and choose the Group created in Step 4 that this rule should apply to.





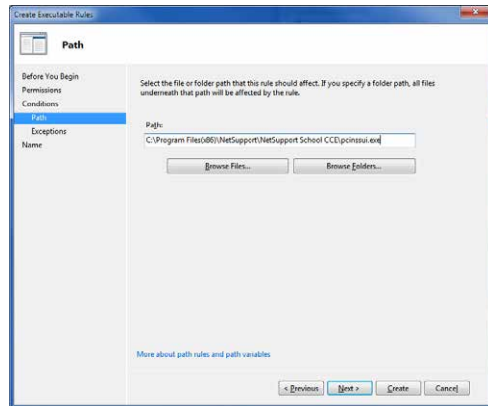
12. On the Conditions dialog select Path as the primary condition and click Next.

13. Select Browse Files... and select the NetSupport School CCE Tutor which is by default installed as follows:

C:\Program Files(x86)\NetSupport\NetSupport School CCE\pcinssui.exe

14. Click Next.

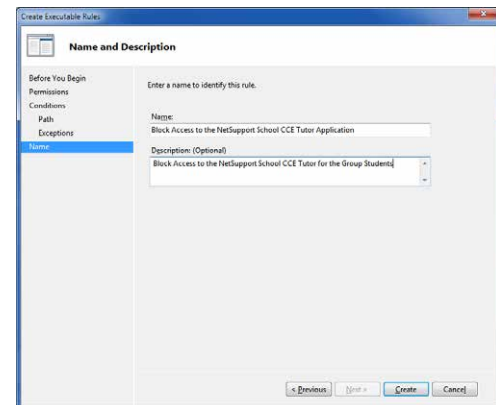
15. On the Exceptions dialog click next as no exceptions are required.



16. On the Name and Description dialog provide a suitable name and optionally a description to identify this rule.

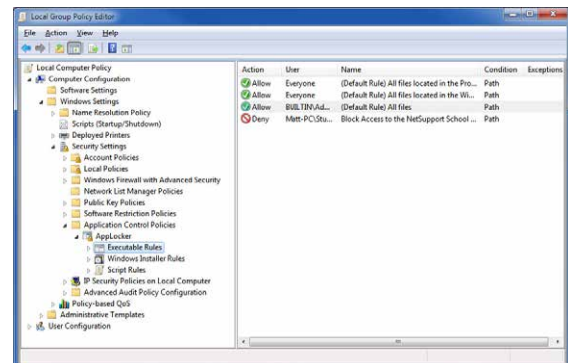
17. Select Create.

18. To ensure that important system files will be allowed to run AppLocker may prompt to create default rules. Select Yes to create the default rules.



19. The Local Policy Editor should now show the Default Rules and the Rule to Block Access to the NetSupport School CCE Tutor for the selected group.

20. To enable AppLocker you must set the Application Identity Service to run automatically.



21. You may want to apply a similar rule to block access to the NetSupport School CCE Student Configurator. Repeat the steps above changing references to the NetSupport School CCE Tutor application to the NetSupport School CCE Student Configurator application which is by default installed as follows:

C:\Program Files(x86)\NetSupport School CCE\pcicfgui.exe.