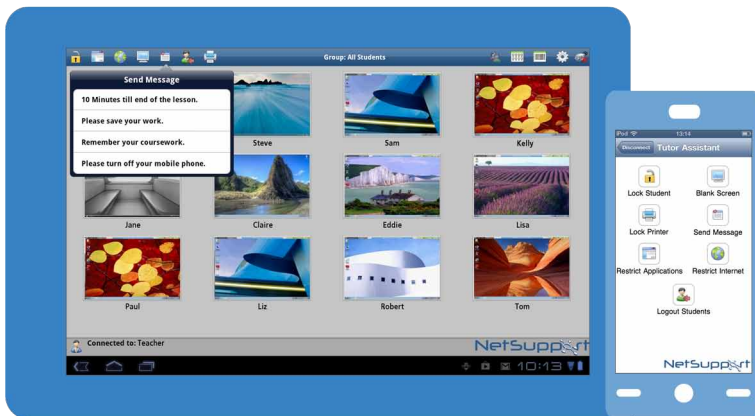




# NetSupport School Tutor Assistant



NetSupport School version 11 introduces a new component available for free from the Apple App store, the Google Play store and the Amazon App store. The new "Tutor Assistant" is designed to provide an extension to the traditional desktop Tutor application. Once installed onto a tablet or smartphone, the app pairs with the desktop Tutor software and delivers the freedom for a teacher to move around the classroom while still being able to monitor and interact with the class, individually and as a whole.



The app allows a teacher to blank screens, lock student mice and keyboards, monitor activity on all student computers, control internet, application and printer usage as well as identify when a student needs help.

Recognising the value of "real" teaching assistants in the classroom, multiple tablets can be used within a single class, ensuring all teaching and support staff can retain full visibility and interaction at all times.

## iPhone, iPod Touch and Android Phones

As well as providing the Tutor Assistant app for iPad and Android Tablets, a version is also available for the iPhone, iPod Touch, Android smartphones and Kindle fire. Working much like a simple TV remote, this variant allows existing devices to be used where tablets are not available and offers one-click access to lock screens, control printing, internet and application use.

All of the mobile and tablet variants are provided without additional cost.

## Features supported on tablets:

- Support for Android/iOS tablets and Kindle Fire.
- View student thumbnails.
- Send students a preset message.
- Block restricted websites.
- Set approved websites.
- Block all internet access.
- Lock/Unlock student computers.
- Logoff student computers.
- Blank/Un-blank student screens.
- Restrict student printing.
- Set approved applications.
- Block restricted applications.
- Select a group of students.
- Details view.
- View student Help Request notifications.
- Zoom on student.
- Sort students by name/tutor order.
- View current application.
- View current websites.
- Set connection password.
- Tutor badge displaying the number of currently connected Tutor Assistants.



## Features supported on smartphones:

- Support for Android and Apple iOS phones.
- Send students a preset message.
- Block restricted websites.
- Set approved websites.
- Block all internet access.
- Lock/Unlock student computers.
- Logoff student computers.
- Blank/Un-blank student screens.
- Restrict student printing.
- Set approved applications.
- Block restricted applications.
- Set connection password.



More info and  
**FREE 30 day trial**  
available here

Real world feedback  
on  
NetSupport School