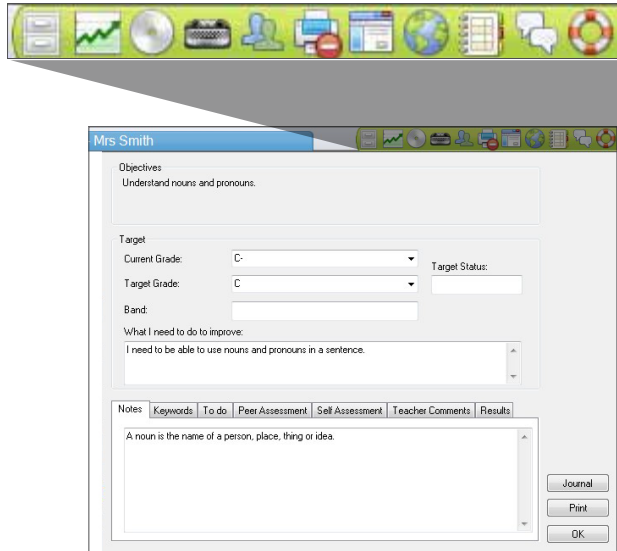




# NetSupport School Student Toolbar



For many, there is an assumption that a classroom management solution is a tool to deliver instruction in the classroom, manage PC resources and control student access to resources. All of these aspects are of course true, however NetSupport School is unique in also providing a tool specifically to aid the student in the ICT classroom: the Student Toolbar.

The Student Toolbar may at first glance appear to be a simple interface to provide students with confirmation that a lesson is in progress and that a teacher is monitoring their computer. This of course is a useful role in itself, but the Student Toolbar is a single point where students are able to access relevant lesson information, access their own personal resources, take notes and be aware of any restrictions that are currently in place.

**Let's review these strands individually:**

## Access relevant information

The Student Toolbar provides the student with real-time lesson information: the lesson title; time remaining; any rewards they have been given by the teacher; and request help from the teacher. Where students don't want to put their hands up and identify to the whole class that they need help, they can simply click on the help button which will send a notification of their request to the teacher PC.

In addition however, if the teacher is walking around the classroom, they can identify, silently, students who need help as their toolbar will turn red. In keeping with current educational guidelines, the toolbar also ensures with a single click that a student can review the lesson objectives that have been specified by the teacher.

## Access personal resources

The Student Toolbar provides one-click access to the student's digital journal, another unique feature in NetSupport School. The journal allows students to take notes and record any relevant content during the lesson. Their journal is already automatically populated with key information for the teacher throughout the lesson. The student toolbar also provides both an indicator and one-click access to the student's personal resources folder, making navigation easier for less competent students as well as visually reminding them if they have a USB memory stick currently in the PC.

## Be aware of restrictions

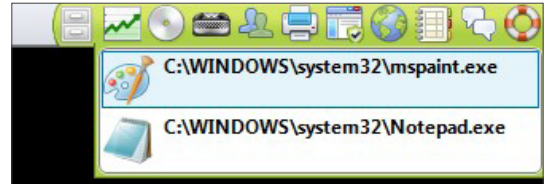
It's expected that a classroom management solution will likely limit access to websites and applications the student can use, but how is the student expected to know this? How are these restrictions communicated in a library where immediate adult supervision may not be present? Time is often wasted and frustration generated when students try websites to see if they are allowed to view them or attempt to discover which applications are currently available. The NetSupport Student Toolbar provides a visual indicator for each category to show whether restrictions are currently in place. Clicking on the icon for each category will provide a summary. So, if websites are restricted, clicking on the website icon will provide the student with a definitive list of those sites that are currently available for them to use as resource in the lesson. The same approach applies to application use. The Student Toolbar also indicates whether any printer restrictions are in place, whether restrictions on the use of USB memory sticks or CDs are running, whether instant messenger has been blocked and whether keyword monitoring is operational. In each case, the toolbar highlights the scope of the restrictions.

## Printer Management is a key consideration

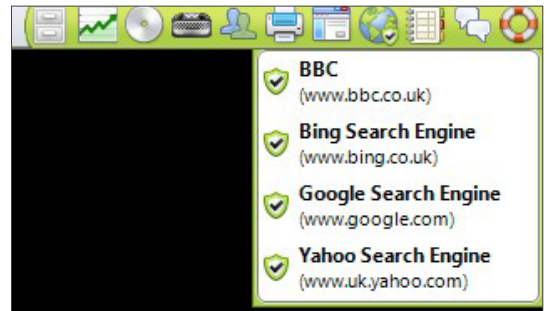
Typically, students will print and print again and keep on trying if restrictions are in place but there is no visual reminder of this. The student toolbar is not only a personal resource for each student, it also helps significantly reduce the number of operational questions directed at the teacher... "Why can't I print?"; "I can't run PowerPoint!" and so on. Since its introduction, feedback has consistently reported that the presence of the student toolbar and the benefits it provides to the student, encourage them to embrace the classroom software rather than simply see it as a restrictive tool.



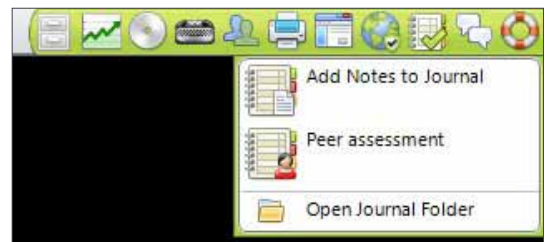
Application restriction status and available apps



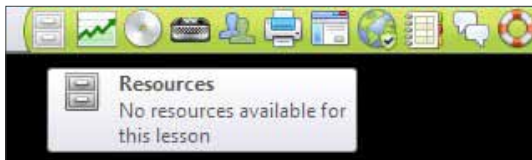
Internet restriction status and sites available for use



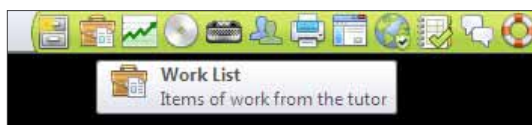
One-click access to personal student journal



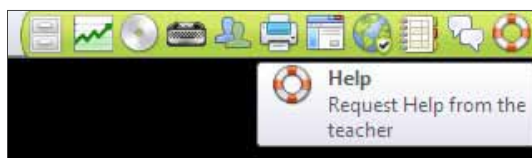
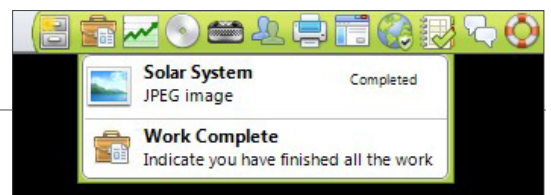
Keyboard monitoring and target word lists



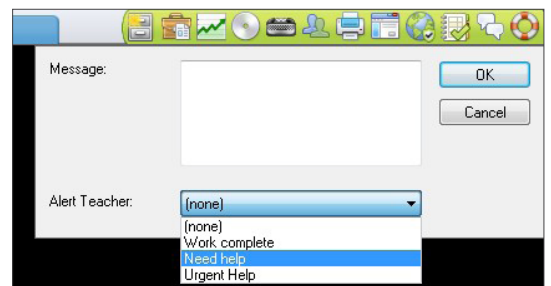
Resource availability and details



Work list from teacher and confirm when done



Request help from the teacher silently



The student toolbar can be toggled on and off as required with a single click from the NetSupport School teacher's toolbar.

More info and FREE 30 day trial available here

Real world feedback on NetSupport School

