

## Installing NetSupport School 10.50 for use with Windows Terminal Services

NetSupport School is a class leading training software solution, providing Teachers with the ability to instruct, monitor and interact with their Students either individually, as a pre-defined group or to the overall class.

With a wealth of unique and innovative features, NetSupport School is consistently voted 'Top Of The Class' by industry experts. Combining advanced classroom PC monitoring, real-time Presentation and Annotation tools, with an innovative customised Testing suite, Internet and Application control, automated Lesson Plans, Printer Management, Instant Messenger control, Content Monitoring and Desktop Security, NetSupport School rises to the challenge and requirements of today's modern classroom.

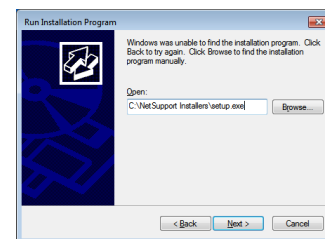
### Planning an Installation

For a Teacher to be able to connect and communicate with each Windows virtual desktop session the NetSupport School Student component must be installed on the Server running the Windows Terminal Services. On the computer that will be used by the Teacher you will additionally need to install the NetSupport Tutor component.

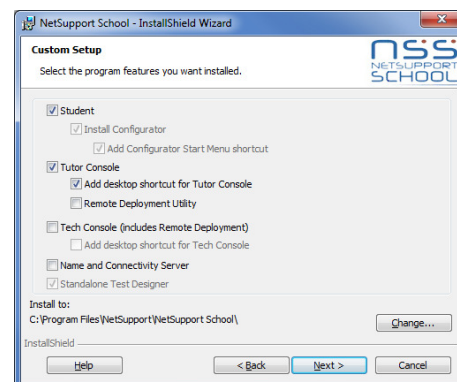
### Installing NetSupport School

On each server that is running the Windows Terminal Services run the NetSupport School installation program from within the "Install Application on Remote Desktop Session Host".

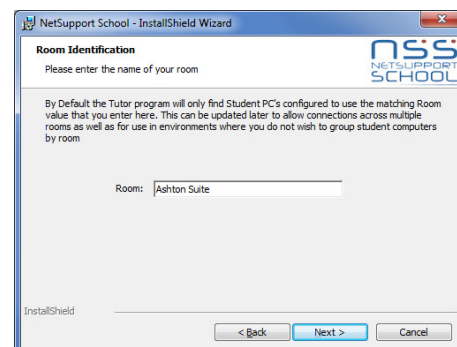
1. On the Windows Terminal Server select "Install Application on Remote Desktop Session Host" which can be found under Programs in Control Panel. Follow the on screen instructions and at the 'Setup Type' dialog select Custom.



2. On the 'Custom Setup' dialog choose the Student option.
3. If the Teacher will also be using a virtual session you should also select the Tutor Console option. Alternatively, install the Tutor Console on the Teachers computer.



4. On the Room Identification dialog enter the name of the Room that the virtual desktop sessions are located in, this information will be used to ensure that the Teacher and Students are connected to each other using NetSupport School.



Congratulations, you have completed a basic installation of NetSupport School in a Microsoft Terminal Services environment, for more options please refer to the NetSupport School Manual.